



Visitor information Rotterdam World Gateway

Welcome

Welcome to Rotterdam World Gateway (RWG). RWG puts great emphasis on safety and upholds its policy striving to have 0-incidents. This visitors' folder contains the most important security and safety rules that apply at RWG. In order to guarantee this safety, it is important that all rules in effect are followed closely by RWG staff as well as visitors.

Access to the terminal

Prior to visiting the terminal, you will have been registered with Security by the RWG contact person. Upon arrival at RWG, please report to the Security Lodge with your original, valid proof of identification (ID card or passport). You can temporarily park your vehicle at the Security Lodge. When visiting RWG for the first time, you will be asked to watch a safety instructions video and to answer a number of questions for the purpose of verification. This safety instruction will be conducted annually. If the questions are answered correctly, an access card will be issued. Security will then direct you to one of the two office buildings at the terminal, the Main Office Building (MOB) or the

Terminal Operations Building (TOB), depending on with whom you have an appointment. At the entrance of each office building, a reception desk is located. You must report to the reception desk employee, who will notify the RWG contact person. Visitors remain guided by a RWG contact person for the duration of the visit.

Security

- RWG is subject to the Port Security Act and the ISPS (International Ship and Port Facility Security) code.
- Access to the terminal will not be granted without advanced notification via the RWG contact person.

Seamless access to Europe

- Permission to enter the terminal will be restricted to the timeframe of the visit and the area relating to the purpose of the individual's visit.
- All visitors must have a valid access card at all times.
- Access cards issued by RWG must be worn/displayed visibly at all times.
- RWG Security conducts random inspections.
- Security at the terminal includes video surveillance via a CCTV system.
- Photography and the recording of video or sound are prohibited on RWG premises unless the Public Affairs & Communications department has given written permission to do so.

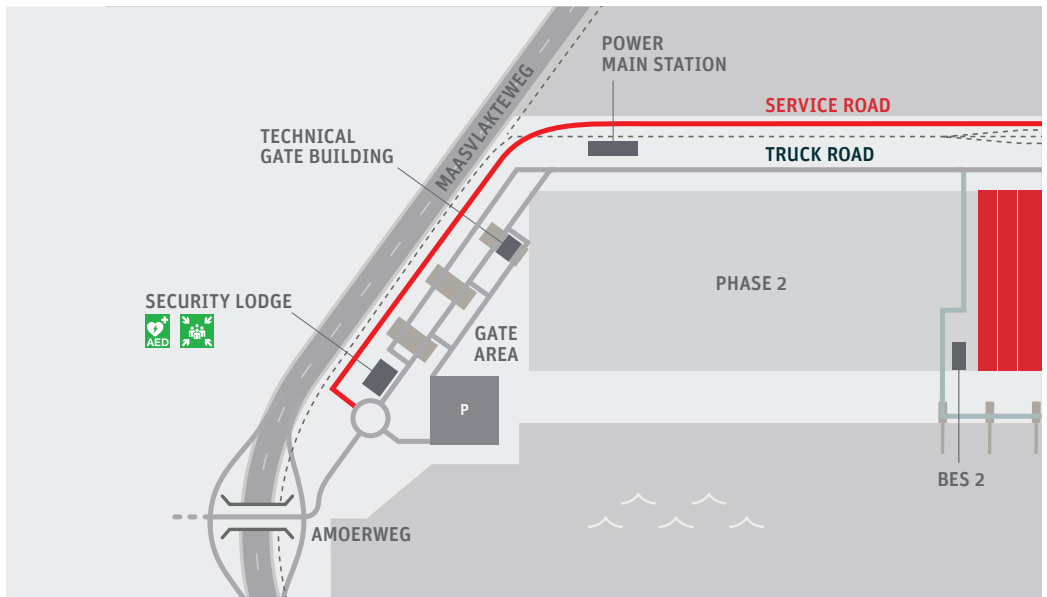


Safety

- The use of Personal Protection Equipment (PPE) is required everywhere at the terminal except in areas designated as PPE free (amongst others the office buildings and the surrounding car parks). At least the following PPE is required: a safety helmet, a fluorescent safety vest or jacket and protective footwear.



- Individuals under 18 years of age will not be granted access to the terminal, unless an exemption has been requested via the RWG contact person and the further set conditions have been met.
- If the visitor does not have PPE at his or her disposal, RWG will provide this if requested in advance.
- The Road Traffic Act applies at the RWG terminal, which includes the obligation of wearing a seat belt.
- The speed limit on the terminal is 30 kilometres per hour, unless indicated otherwise.
- Overtaking other vehicles is prohibited on the terminal.
- Parking is allowed only at the car parks near the office buildings, in the designated parking spaces. Additional parking rules apply in operational areas.
- Flashing lights and/or hazard lights must be used in operational areas.
- The use of telephones in moving vehicles is prohibited unless it is hands-free.



- All (traffic) signs and instructions must be followed closely, as well as the directions of RWG employees and Security staff.
- Smoking is forbidden at the terminal, except in the designated smoking areas.
- It is forbidden to enter the terminal while under the influence of alcohol and/or drugs, to bring alcoholic beverages and/or drugs onto RWG property and to consume them while on RWG premises.
- Entering operational areas without the permission of RWG is forbidden.
- It is forbidden to mount or operate installations and machines without the permission of RWG.
- Respect all barriers and road markings.
- Do not obstruct access to fire extinguishers, (emergency) exits or entrances.
- Keep the terminal tidy.
- In case of evacuation, follow instructions of your RWG host/hostess.



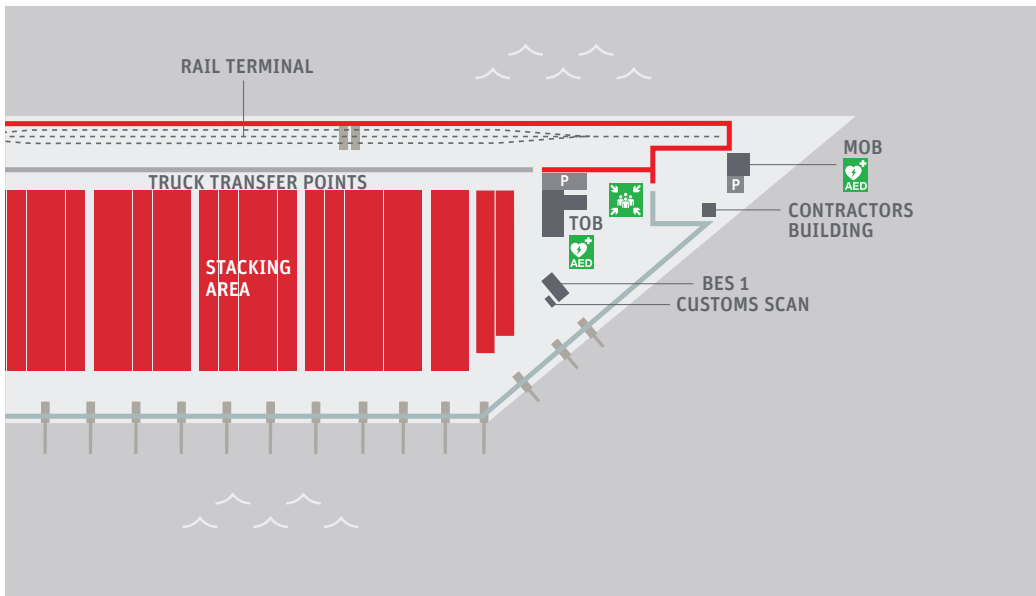
Liability

Visiting the terminal of Rotterdam World Gateway B.V. (RWG) will be at your own risk. Please be

aware of certain risks relating to a container terminal in operation like RWG, for example the risk to suffer damages while participating in the traffic on the terminal, during loading and/or discharging cargo, while moving containers or other cargo as well as during other terminal activities relating to storage and stevedoring. RWG and/or personnel assigned by RWG will not be liable for any damage - of whatever nature and/or of whatever cause - to persons, vehicles, vessels and/or other objects situated on its premises, in the waters adjacent to its premises and/or on ships moored alongside its quays, unless this damage is caused by wilful intent or gross negligence of RWG, its assigned personnel or management.

Sanctions

In the event of not following instructions from RWG concerning safety, hygiene and traffic, RWG reserves the right to impose sanctions, including having the individual removed from the terminal and denying him or her access in the future.



Route

The RWG terminal is located on Maasvlakte 2. To get to the terminal, follow the driving directions below:

- Follow the A15 from Rotterdam to Europoort/ Maasvlakte. At Rozenburg, the A15 will merge into the N15.
- Follow the N15 until you reach the Maasvlakte.
- On the Maasvlakte, take the exit 'Havens 8800-9900'.
- Follow the 'Maasvlaktesteg' and take exit 5 'Havens 8800-9000', access the 'Prinses Amaliaviaduct' viaduct and turn right onto 'Amoerweg' towards RWG.

- On the terminal, follow the sign 'Visitors' and report to Security.

Security Lodge Contact

+31 (0)10 742 20 81
security@rwg.nl

Emergency number

+31 (0)10 742 21 12



Seamless access to Europe

Rotterdam World Gateway B.V.
Port number 8970
Amoerweg 50
3199 KD Maasvlakte 2 Rotterdam

T +31 (0)10 742 20 00
E info@rwg.nl
www.rwg.nl
rwgservices.rwg.nl